

Iwata City Flood Hazard Map (Worst-case Scenarios)

This hazard map points out the hazardous areas when rivers overflow during heavy rainfall. You are requested to discuss evacuation areas and evacuation methods with your family and neighbors before disaster strikes.



Disaster Prevention Information for Your Home

Family Evacuation Areas

1	
2	

Status of Your Home

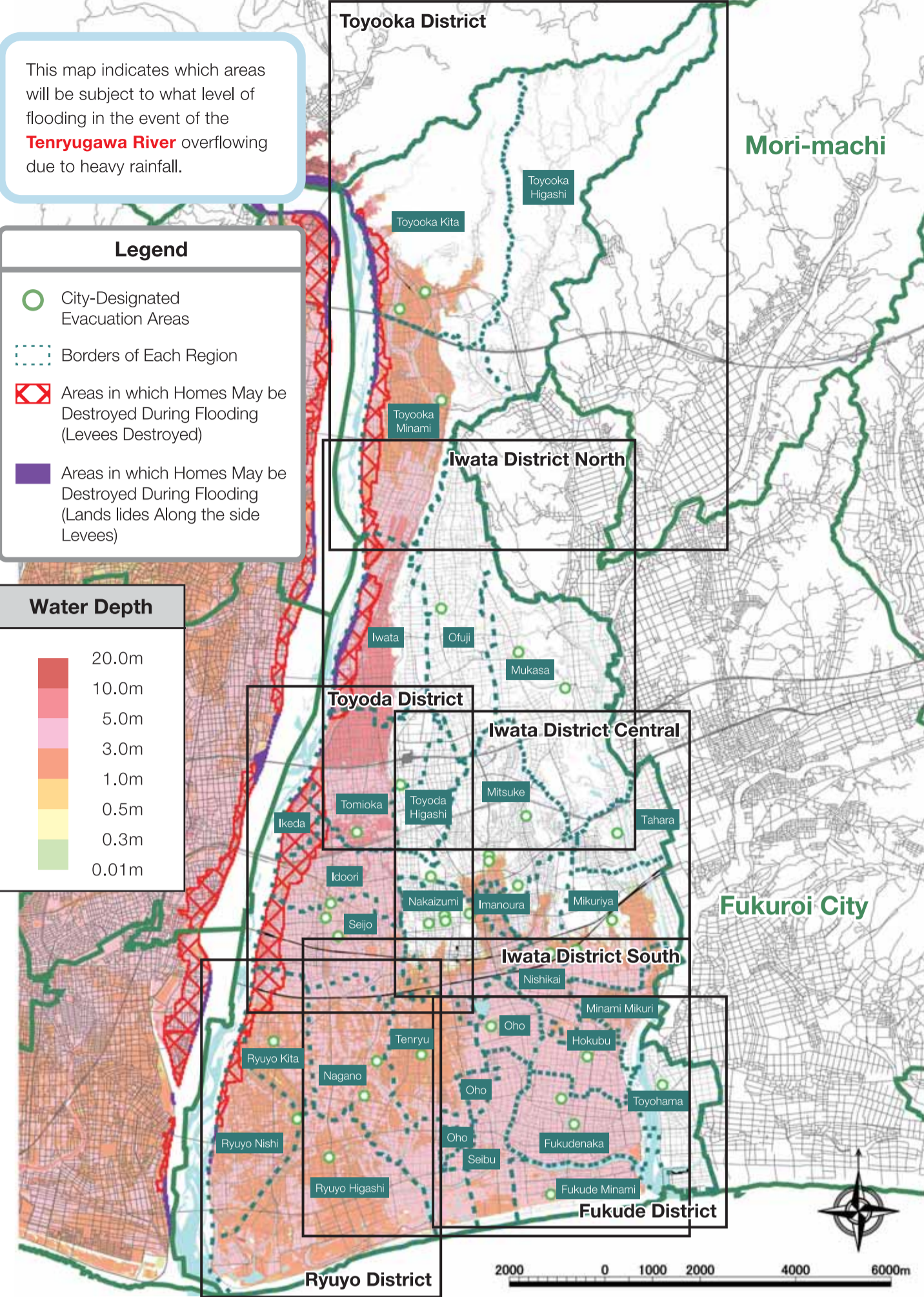
How high will flood water rise?	m
How many hours will be flooding continue?	hours

How to use the Hazard Map

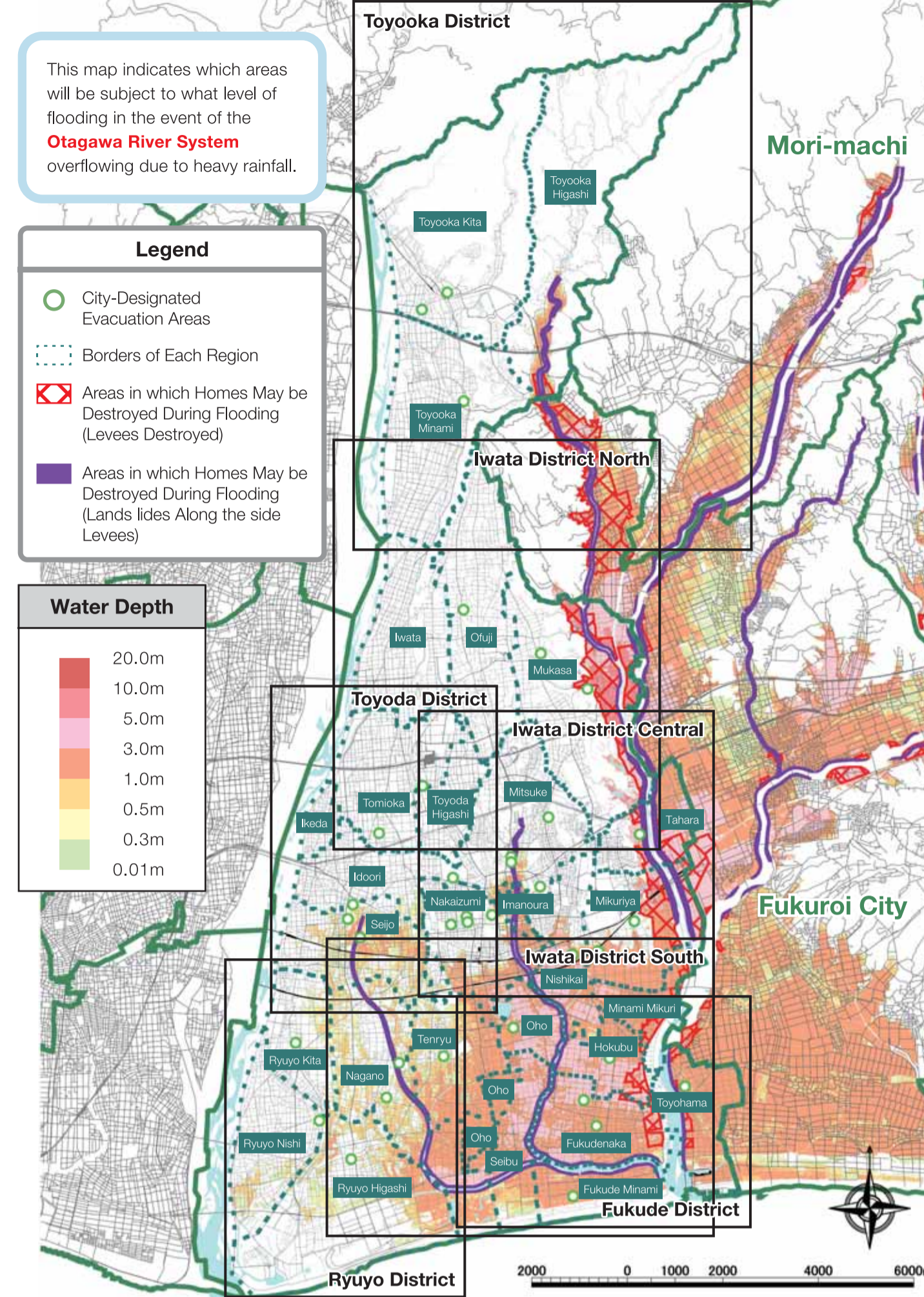
- Check the location of your own home on the map.
- The areas colored in are the hazardous areas.
- Consider places to evacuate to when rivers overflow during typhoons and heavy rainfall.
- Consider how to get to safe locations.
- Work out the best route of escape, and mark them on the map.

Created: March 2023, Inquiries: Iwata City Risk Management Section, 0538-37-2116

Tenryugawa River Hazard Map



Otagawa River System Hazard Map



Consider the actions to be taken to protect lives and the best methods of evacuation during disasters.

Time Elapsed	Situation	Information	Action to Take
Three Days Prior	Typhoon Forms Warning Level 1	Black: Meteorological Information Blue: Information on River Levels Green: Evacuation Information ○ Future Typhoon Movement	○ Watch the weather forecast on TV ○ Double-check the evacuation areas and methods of evacuation on the hazard map
Two Days Prior	Typhoon draws nearer, rain and wind becomes stronger Warning Level 2	◇ Heavy Rain Caution (Heavy rainfall due) ◇ Flood Caution (Increase in river water)	○ Prepare the things you need to take when evacuating ○ Check information on rainfall and rivers on the TV and Internet, etc.
One Day Prior	River water increases	Reached a water level in which flood-fighting teams are on standby Reached a flood caution water level	○ Check upriver rainfall
Twelve Hours Prior	Heavy rainfall increases river water, and water flows alongside the riverbanks	Flood caution information issued Work commences on preparing evacuation sites (places to which safe evacuation is possible)	○ Check the water levels of rivers ○ Recharge the cell phones
Five Hours Prior	There is a chance of the river overflowing Warning Level 3	Reached a water level at which evacuation is decided Flood warning information issued Evacuation order to elderly people, etc., issued	○ Wear loose clothing to facilitate evacuation People who require time to evacuate are to evacuate
Three Hours Prior	Warning Level 4	Reached a flood hazard water level Flood hazard information issued Evacuation order issued	○ Begin evacuating to safe locations Everybody in hazardous areas is to evacuate
Zero Hour	The river overflows Warning Level 5	Flooding occurs Flooding occurrence information issued Emergency safety measures issued	○ Complete evacuating to safe locations Disaster occurred



Storm and Flood Damage

Notifications from the Meteorological Agency

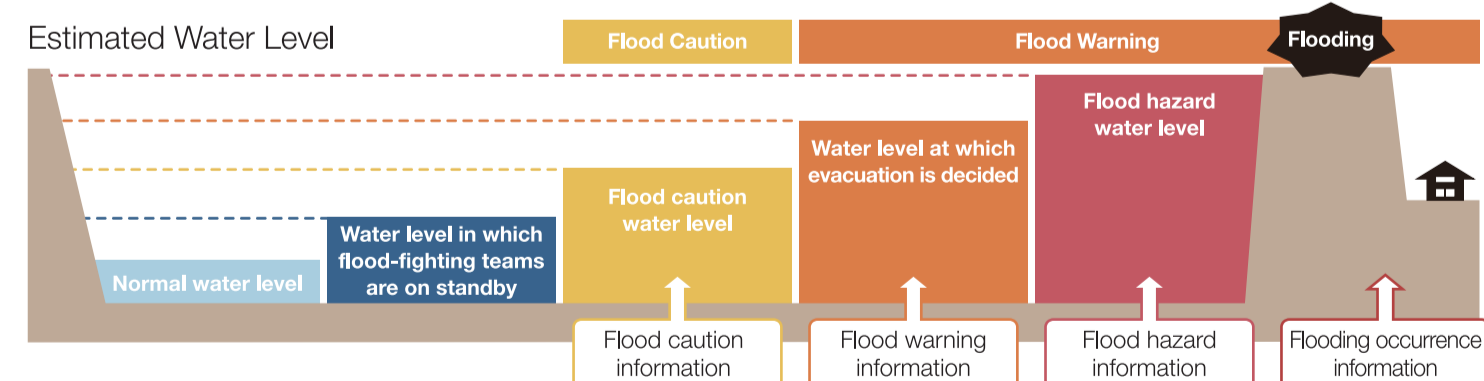
Notifications will be issued for [Cautions] and [Warnings] if heavy rainfall and flooding appear imminent. [Special Warnings] will be issued if torrential rain or a severe disaster appear imminent.



Heavy Rain and Flood Caution	Heavy Rain and Flood Warning	Landslide Alert Information	Special Torrential Rain Warning	Record-Breaking Short-Term Heavy Rain Information
Issued when there is a chance of heavy rainfall and flooding occurring, which may result in a natural disaster	Issued when there is a chance of heavy rainfall and flooding occurring, which may result in a large natural disaster	Issued when the chances of landslides occurring increases	Issued when there is a chance of rainfall at a level that occurs only once in a dozen or more years occurring	Issued after heavy rainfall within a short period of time has occurred

River Water Levels

Flooding forecasts are issued when there is a chance of rivers overflowing.



Types of Landslide Disasters

Keep an eye on all slopes and inclined areas of land near your home during heavy rainfall. If you sense danger, evacuate immediately.

Debris Flows

Rocks and sand from mountains and rivers flowing with water when rain continues for long periods of time, or during intense, heavy rainfall.

[Excluded By]
Earth crumbling nearby rivers. River water becomes cloudy.

Slope Failures

Slopes and inclines suddenly breaking away and sliding downward due to the water that has accumulated within the surface of the soil.

[Excluded By]
Cracks appear in slopes and inclines. Small stones tumble down the surface of inclines.

Landslides

The surfaces of slopes and inclines gradually shifting together with underground water.

[Excluded By]
Cracks in the surface, and the creation of step-like level differences.

Obtaining Disaster-Prevention Information and Evacuation Information

Obtaining Disaster-Prevention Information

It is possible to check for information on the TV, radio or Internet.

E-mail

Register to receive Iwata Hotto Mail

Internet

Iwata City Disaster Prevention Links
https://www.city.iwata.shizuoka.jp/bousai_anzen/1001210.html

[Shizuoka Disaster Prevention] general disaster-prevention application
<https://www.pref.shizuoka.jp/bousai/application.html>

SIPOS-RADAR
 Details on precipitation levels and river water levels, etc.
<http://sipos.pref.shizuoka.jp/>

Meteorological Agency
 Weather forecast, and caution and warning notifications, etc.
<http://www.jma.go.jp/jma/index.html>

Television

Use data broadcasting

Evacuation Information

The city will issue evacuation information if a natural disaster appears imminent.

Warning Level	Action to Take	Evacuation Information
Warning Level 5 Flooding has occurred	A natural disaster has occurred. This is a life-threatening situation. Do everything to protect your safety.	Emergency safety measures (issued by Iwata City)
Warning Level 4 Reached a flood hazard water level	Evacuate immediately from the hazardous area.	Evacuation orders (issued by Iwata City)
Warning Level 3 Reached a water level at which evacuation is decided	The elderly and other people who require time to evacuate are to begin evacuating. Other people are to begin evacuation preparations.	Evacuation of the elderly, etc. (issued by Iwata City)
Warning Level 2 Reached a flood caution water level	Use the hazard map to check the areas at risk of disaster, the evacuation areas and the routes to them.	Heavy rain cautions, flood cautions (issued by the Meteorological Agency)
Warning Level 1 Reaches a water level in which flood-fighting teams are on standby	Check the weather forecast to see whether or not the risk of disaster is imminent, and check your own evacuation preparations in the event of a disaster occurring.	Early warning information on extreme weather (issued by the Meteorological Agency)

Items to Check Before Evacuating

Check the location of the evacuation site and the route

Evacuation sites are not the only places to evacuate. It is also possible to evacuate to the homes of family members and friends who live in safe areas. Consult with these people in advance.



Check Evacuation Methods

Do not evacuate by car. Cars will stop moving if the water level rises to around 30cm.

Evacuating to Evacuation Sites

Moving to a safe location

Emergency safety measures

This is a life-threatening situation. Check your own level of safety immediately.

Details How to Know When Evacuating

Evacuate as Soon as Possible

It is dangerous to evacuate after rivers have overflowed. Even if the city has not issued evacuation information, evacuate if you sense any danger.

Help Others

It is risky to evacuate alone. Evacuate together with your neighbors.

Evacuating During Heavy Rainfall

It is dangerous if the roads become flooded. Do not evacuate by car.

Points to Note When Evacuating

- Place the items to intend to take when evacuating into a rucksack to leave both hands free.
- Do not evacuate while wearing rubber boots or with bare feet. Trainers with tie-up laces are favorable.
- Wear loose clothing, and evacuate together with two or more people.
- Elderly people and disabled people are to be piggybacked to safe locations.
- The depth of water that can be walked through comes up to just below the knees. If the water is deeper than this, wait in an elevated location to be rescued.
- Use a long stick as an alternative to a walking stick, and check each step for safety before walking into it.

Advance Preparations

Checking Around in Your Home

Regularly check around your home to identify any items that are damaged in order to protect your home from wind and flood disasters.

Cleaning Gutters and Drains

Home repairs (misplaced roof tiles, blocked rain gutters)

Secure items that may be blown about by wind

Preparing the Items to Take with You and the Items to Leave a Home During Disasters

Necessary Items During Disasters
 Natural disasters occur suddenly. Sort out the items that are necessary during disasters, and prepare them in advance

Items to Take with You During Disasters

Prepare two days-worth of water, food and other items required during daily life. Place them together in a rucksack, and place this in a location that is immediately accessible if you need to leave the home.

Items to Leave at Home

Prepare sufficient water and food, etc., to last three days at the least or one full week if possible. Of this, a three-day supply of food that does not require cooking should be prepared.

Checklist

Items to Place in a Rucksack		Items to Leave at Home	
Item	✓	Item	✓
Rucksack		Clothes, undergarments	
Drinking Water		Sleeping bag, blankets	
Food (that does not require cooking)		Cotton work gloves, towels, wet tissues	
Radio, flashlight		Valuables (cash, bank account books, Health Insurance cards)	
Dry batteries		Prescription medicine, first-aid kits	
Cell phone (recharger, batteries)		Face masks, alcohol-based sterilizer, thermometer	
Rainwear		All other items required by the family	

Standard for One Week (Per Person)

Drinks
3L/day x 7 days = 21L

Food
3 meals/day x 7 days = 21 meals

Gas cartridge stove, cassette cylinders

This enables food to be heated

One cassette cylinder is capable of boiling 1.5L of water ten times.

Water and Food

Use the oldest items first, and then purchase new items to replace them

Afterconsumption Purchase more